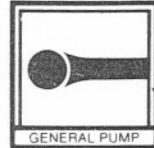
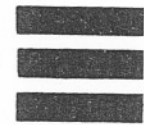
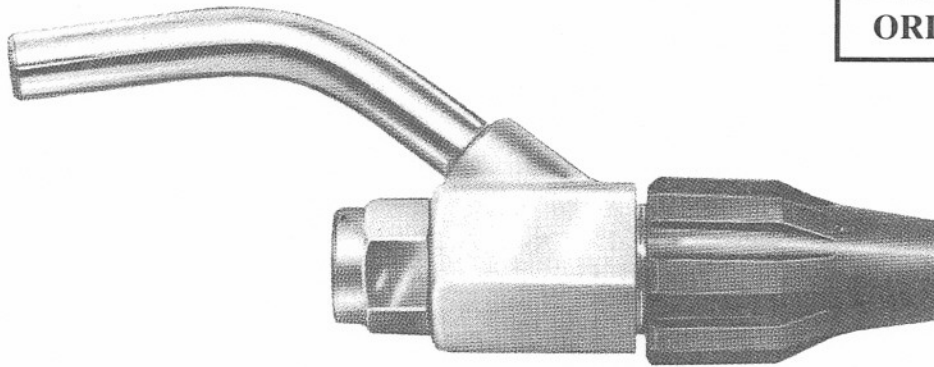


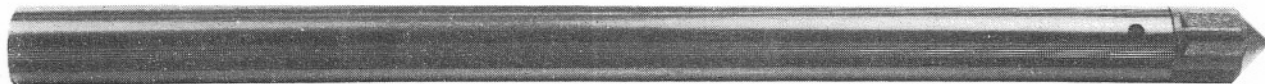
**SAND BLASTING HEAD
TESTINA SABBIANTE**



**SAND POKER
SONDA ASPIRAZIONE SABBIA**



ORD. CODE: ZTESAB



ORD. CODE: ZTESOND

TECHNICAL CHARACTERISTICS - CARATTERISTICHE TECNICHE

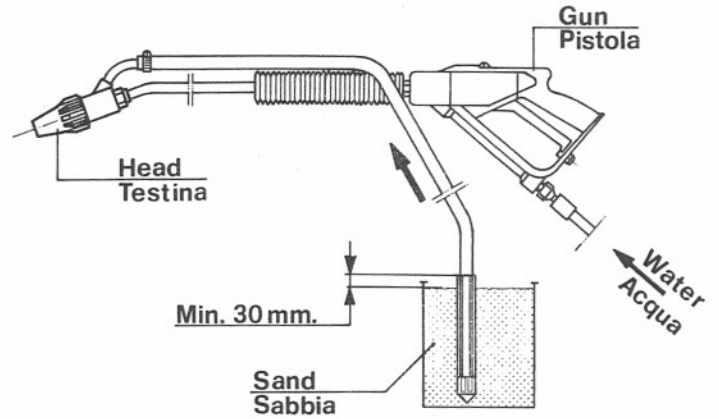
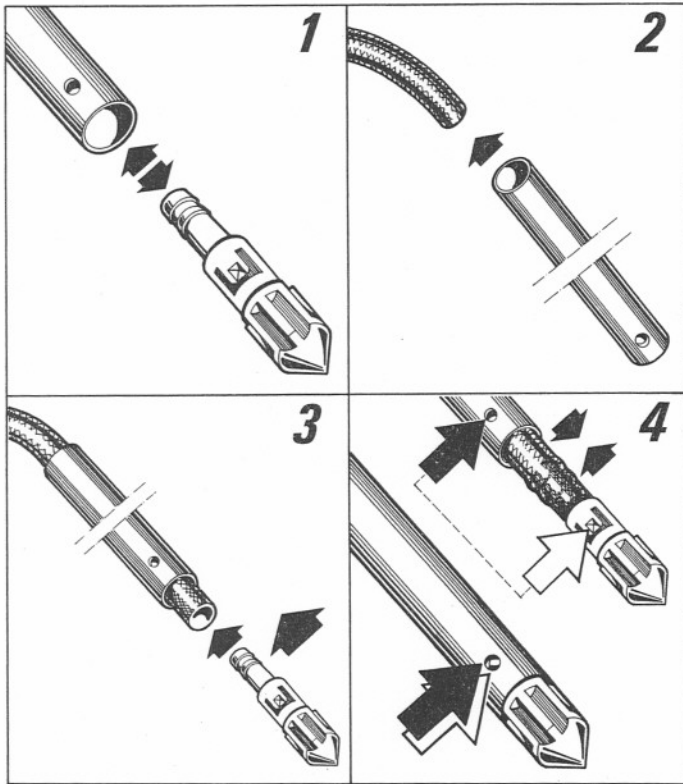
WORKING PRESSURE PRESSIONI DI LAVORO		VOLUME PORTATE	
bar	P.S.I.	l/min.	G.P.M. (USA)
70 ÷ 200	1000 ÷ 3000	8 ÷ 50	2,1 ÷ 13,2

MODEL	SUITABLE FOR - UTILIZZABILE PER
0	WW90 - W98 - WW141 - WW161 - WS171 - W201 - WS201 - W921 TT901 - T981 - TT1411 - TT1611 - TS1711 - T2011 - TS2011 - T9211 Turbo 8/90 - 12/150 - 14/160
1	W70 - W72 - W73 - WW74 - WW75 - WW93 - W99 - WS133 - WS137 - W151 - WS 151 - W403 - W905 - WW906 - W972 - W973 - W979 T701 - T721 - T731 - TT741 - TT751 - TT931 - T991 - TS1331 - TS1371 - T1511 - TS1511 - T4031 - T9051 - TT9061 - T9721 - T9731 - T9791 Turbo 8/70 - 21 - 11/90 - 12/100 - 137 - 14/110
2	W71 - W91 - WW94 - W100 - W101 - WS101 - W131 - WS131 - W162 - WS162 - WS202 - W913 - W916 - W995 T711 - T911 - TT941 - T1001 - T1011 - TS1011 - T1311 - TS1311 - T1621 - TS1621 - TS2021 - T9131 - T9161 - T9951 Turbo 11/70 - 13/90
3	W81 - W92 - WS92 - W132 - WS132 - WS152 - W912 - W996 T811 - T921 - TS921 - T1321 - TS1321 - TS1521 - T9121 - T9961
4	W82 - WS82 - W102 - WS102 - W103 - W163 - W203 T821 - TS821 - T1021 - TS1021 - T1031 - T1631 - T1631 - T2031
5	W134 - W305 T1341 - T3051

OPERATING INSTRUCTIONS

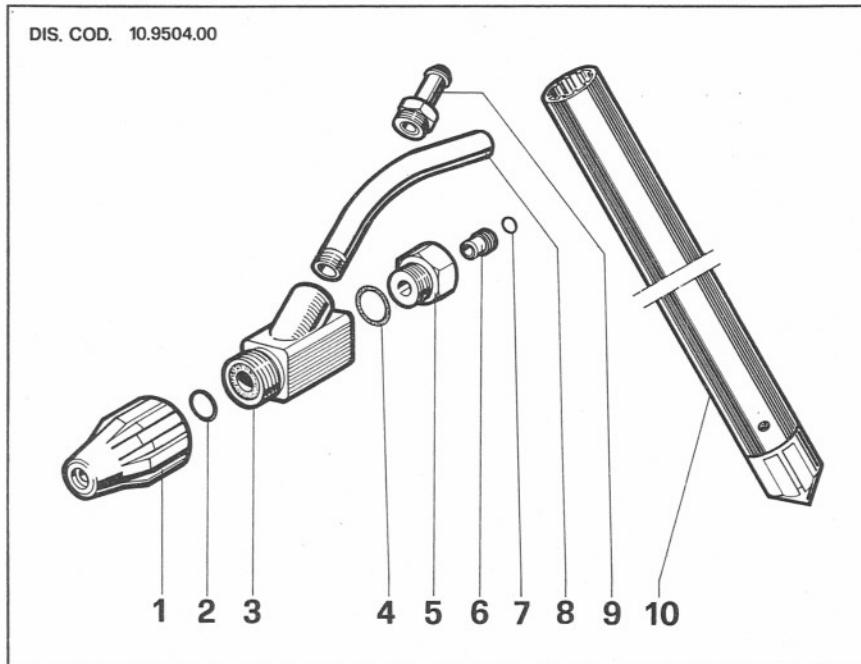
- INSTRUCTIONS FOR ASSEMBLY OF SAND POKER
- ISTRUZIONI MONTAGGIO SONDA

- USE DRY SIFTED SAND
- USARE SABBIA ASCIUTTA E SETACCIATA



TYPE OF SANDBLASTING TIPO DI SABBIATURA	TYPE OF SAND TIPO DI SABBIA	GRAIN Ø
■ LIGHT ■ LEGGERA	QUARZ QUARZO	in 0 ÷ 0,02 mm 0 ÷ 0,5
■ STANDARD	QUARZ QUARZO	in 0,024 ÷ 0,035 mm 0,6 ÷ 0,9
■ HEAVY ■ FORTE	SILICA SILICEA	in 0,035 ÷ 0,055 mm 0,9 ÷ 1,4
SAND CONSUMPTION: 460 ÷ 860 lbs/h		
CONSUMO SABBIA: 210-390 Kg/h		

DIS. COD. 10.9504.00



PARTS LIST

POS.	CODE CODICE	DESCRIPTION DESCRIZIONE	N. PCS.
1	10.7050.01	Assieme ghiera e ugello Ø 6	1
2	90.3828.00	OR Ø 12,37×2,62	1
3	10.7062.01	Corpo	1
4	90.3593.00	OR Ø 15,6×1,78	1
5	10.0129.70	Nipplo	1
6	***	See Table A - Vedi tabella A	1
7	90.3576.00	OR Ø 6,75×1,78	1
8	10.0137.89	Raccordo	1
9	96.3295.00	Raccordo diritto Ø 14-A richiesta	1
10	Z TESOND	Tubo aspirazione sabbia	1

TABLE A - TABELLA A

MODEL	POS.	CODE CODICE	DESCRIPTION DESCRIZIONE	N. PCS.
0	6	10.0141.66	Ugello Ø 1,5	1
1	6	10.0133.66	Ugello Ø 1,6	1
2	6	10.0134.66	Ugello Ø 1,7	1
3	6	10.0135.66	Ugello Ø 1,85	1
4	6	10.0140.66	Ugello Ø 2,1	1
5	6	10.0330.66	Ugello Ø 2,3	1